

Outside-the-Lines.com ©

Scott Cummins

# Symmetrical Name Bugs

Begin by folding the paper in half. Crease the paper and then unfold it.

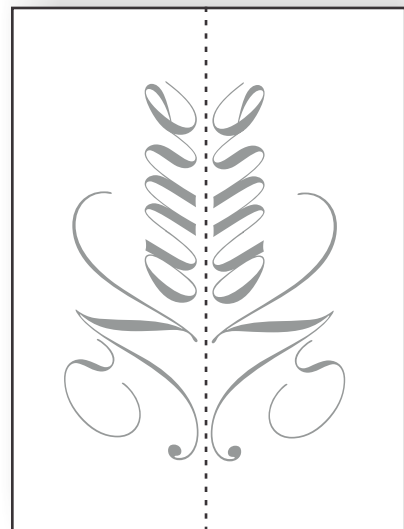
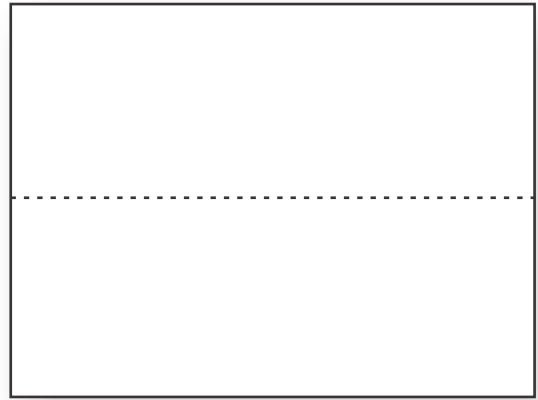


Use a your pencil to write your name along the crease. It should very large and nearly fill the paper. Then go over the lines to make them dark.

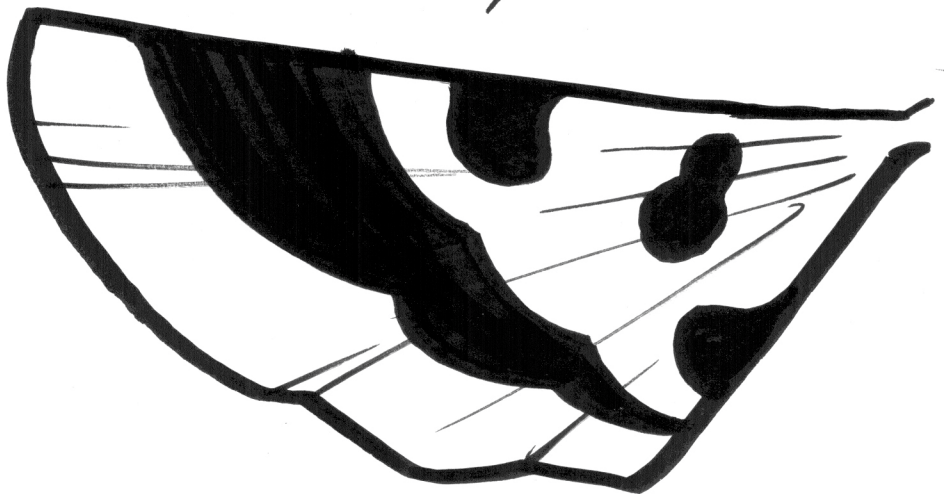
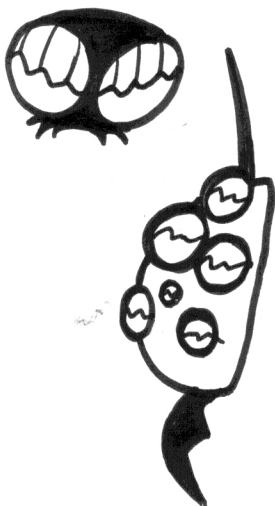
Re-fold the paper and scribble behind the name you wrote to transfer it to the other side of the paper. This is the symmetrical transfer method. The transferred name will be in reverse and upside down. Cursive handwriting works best. Don't go with your first try. Do a few versions before settling on a design.

Turn the paper vertical. (either way) and begin making your insect design. Use the handouts for ideas. One make choose to trace wings and legs from the handouts. It can also be useful to draw details on one side of the insect in pencil and then transfer them to the other side of the bug in the same method as the original lettering before coloring the insect.

Use colored pencil to shade the design. Markers may be used for outlining.



## A collection of black and white line drawings of insect parts, including legs, wings, and antennae, arranged in a circular pattern around a central point. The drawings are stylized and appear to be cutouts or templates for a project. The parts include: a large leg with spines on the left; a smaller leg at the top; a wing with a network of veins on the right; a larger wing with a similar vein pattern below it; and a small, textured, circular object at the bottom. The word 'Symmetrical' is partially visible in the top left corner.



# Symmetrical Name Bugs





# Symmetrical Name Bugs

Begin your design by folding a paper in half and writing your name along the fold. It's not necessary to stay right on the crease.

Look for particular shapes in the design that resemble bug parts. Remember that you can add anything that you want.

This design has eye and wing shapes already. The insect can be made to face either direction.

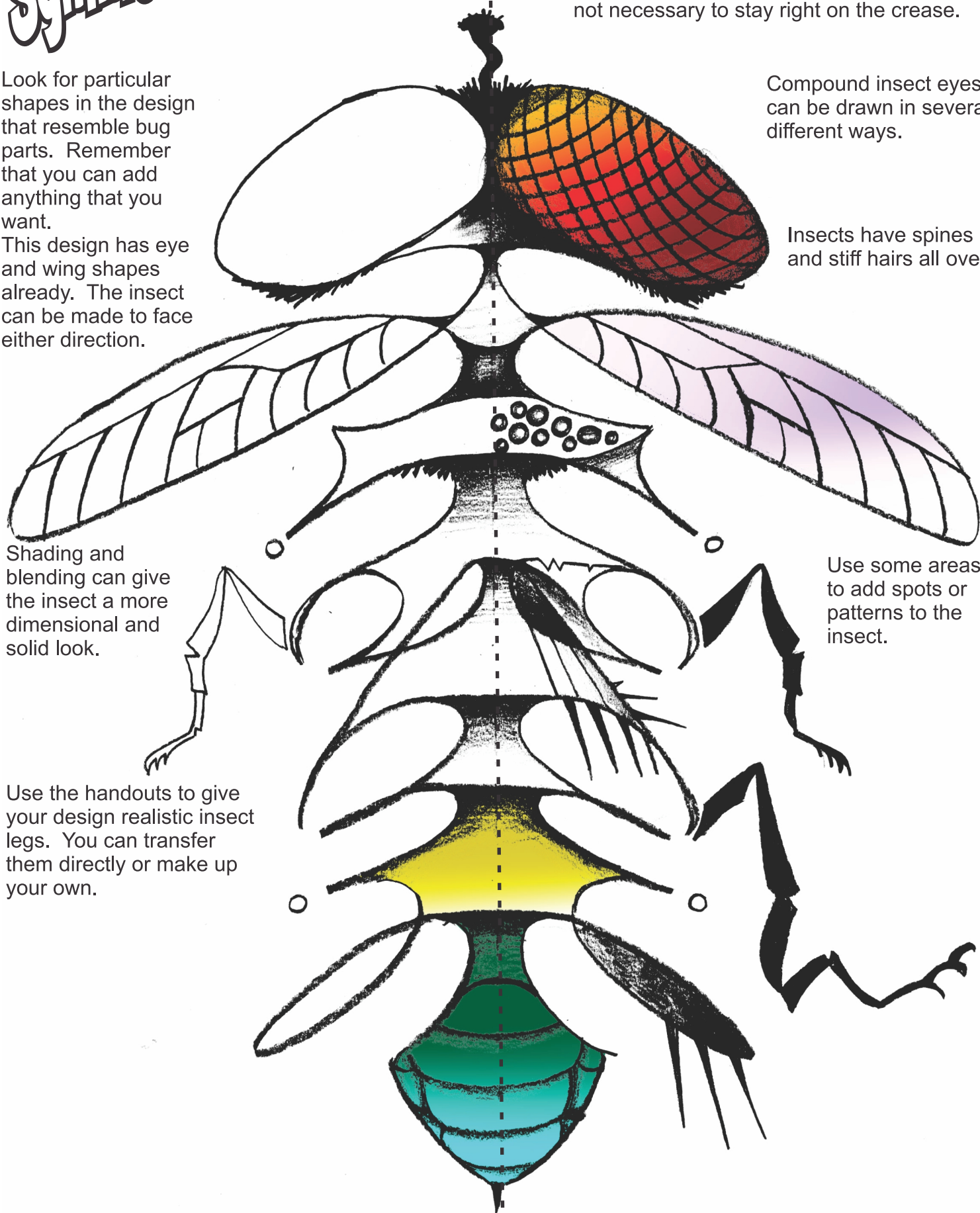
Compound insect eyes can be drawn in several different ways.

Insects have spines and stiff hairs all over.

Shading and blending can give the insect a more dimensional and solid look.

Use some areas to add spots or patterns to the insect.

Use the handouts to give your design realistic insect legs. You can transfer them directly or make up your own.

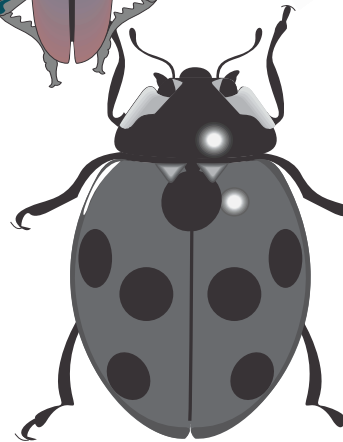
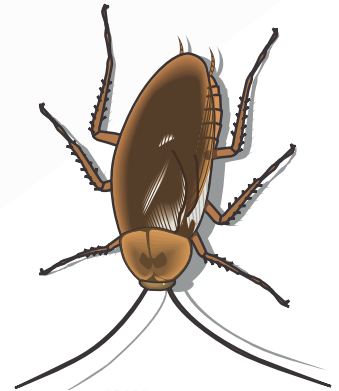
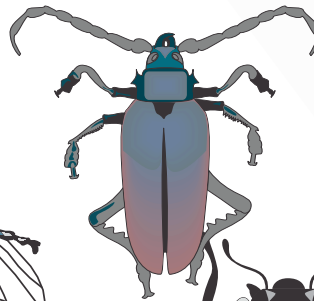
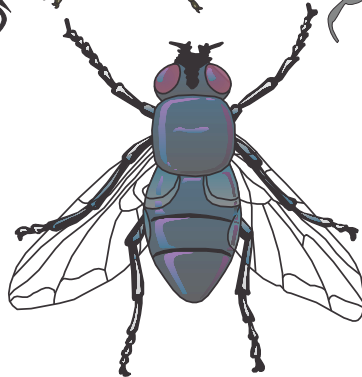
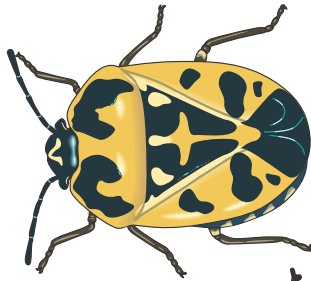
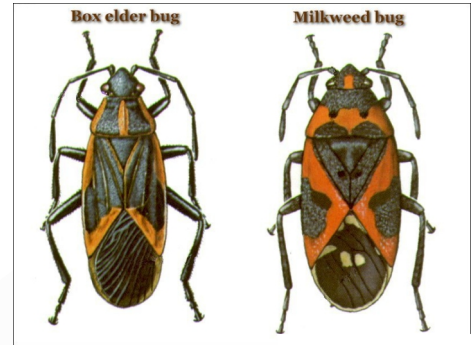
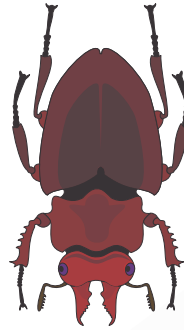


# Symmetrical Name Bugs

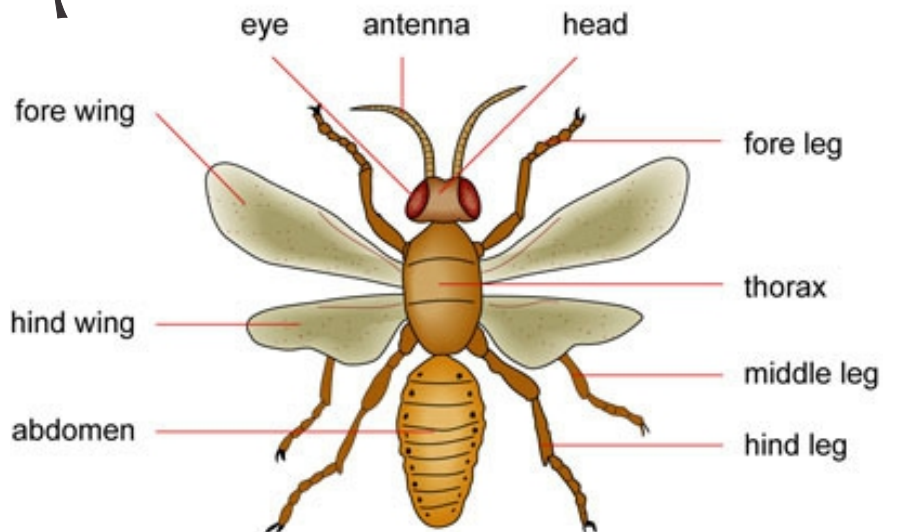
If you'd prefer, you can create a beetle design by enclosing the part of the original design and using the lettering as a design on the beetle's back.



# Symmetrical Name Bugs

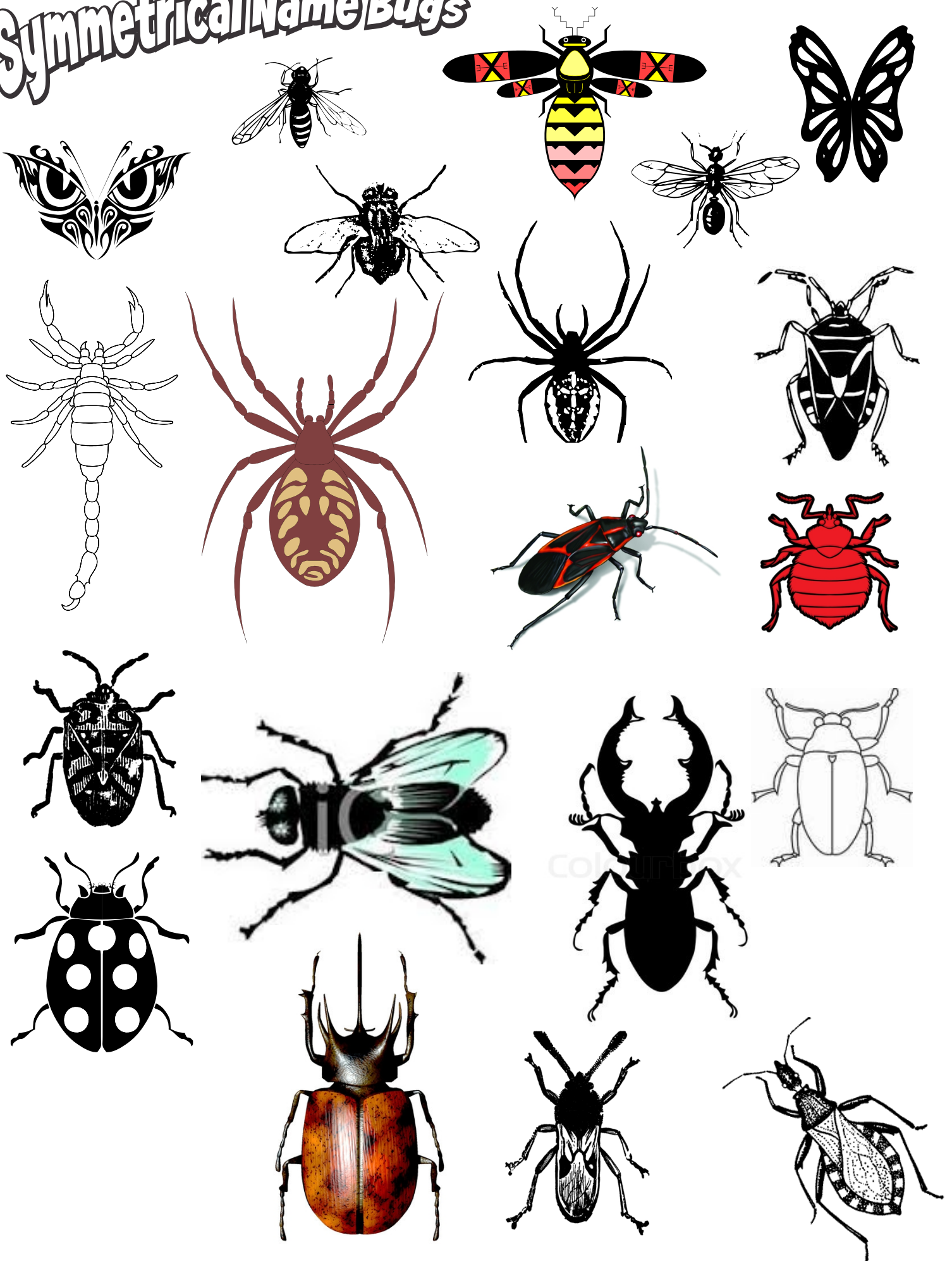


## MORPHOLOGY OF A FLYING INSECT





# Symmetrical Name Bugs





# Symmetrical Name Bugs

